

SPECTRAWIN[®] 2

SpectraWin 2 is the latest member of the SpectraWin software family. Like its predecessor, SpectraWin 2 is a Windows (98, ME, 2000, XP) based control program designed to provide a powerful and easy-to-use interface to control and manipulate data from your PR-6XX (PR-640, PR-645 or PR-650) and PR-7XX (PR-704*, PR-714*, PR-705 or PR-715) SpectraScan spectroradiometer. In addition to the standard features of measurement and display of spectral power distribution, luminance and colorimetry of the source, SpectraWin 2 has additional features for viewing, analyzing and calculating measured data.

Multiple Choice

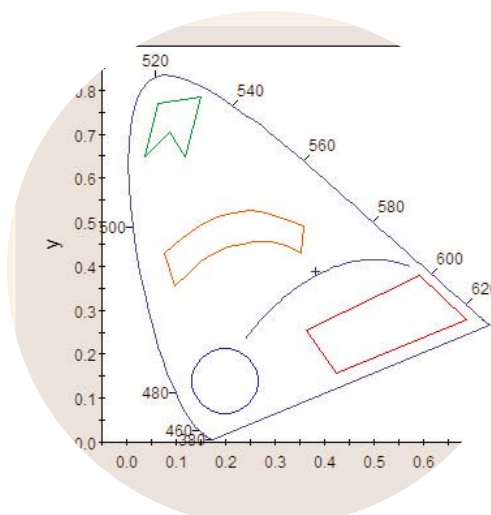
SpectraWin 2 can be purchased in three versions: SpectraWin Lite, SpectraWin Pro and with the RGB DisplayCal option. SpectraWin Lite provides the basic suite of measurement capabilities. SpectraWin Pro includes a powerful Macro Scripting tool to help you automate your measurement tasks. The RGB DisplayCal package turns your SpectraScan into a Windows based display calibration tool enabling you to interactively set the white point of the display from a "learned" stimulus (golden display) or by entering target values.

Capabilities

- ◆ Spectral Radiance/Irradiance
- ◆ Luminance/Illuminance
- ◆ CIE Chromaticity
- ◆ Correlated Color Temperature
- ◆ $L^*a^*b^*$ / $L^*u^*v^*$
- ◆ ΔE^*ab , ΔE^*uv
- ◆ Reflectance
- ◆ Transmittance
- ◆ Optical Density

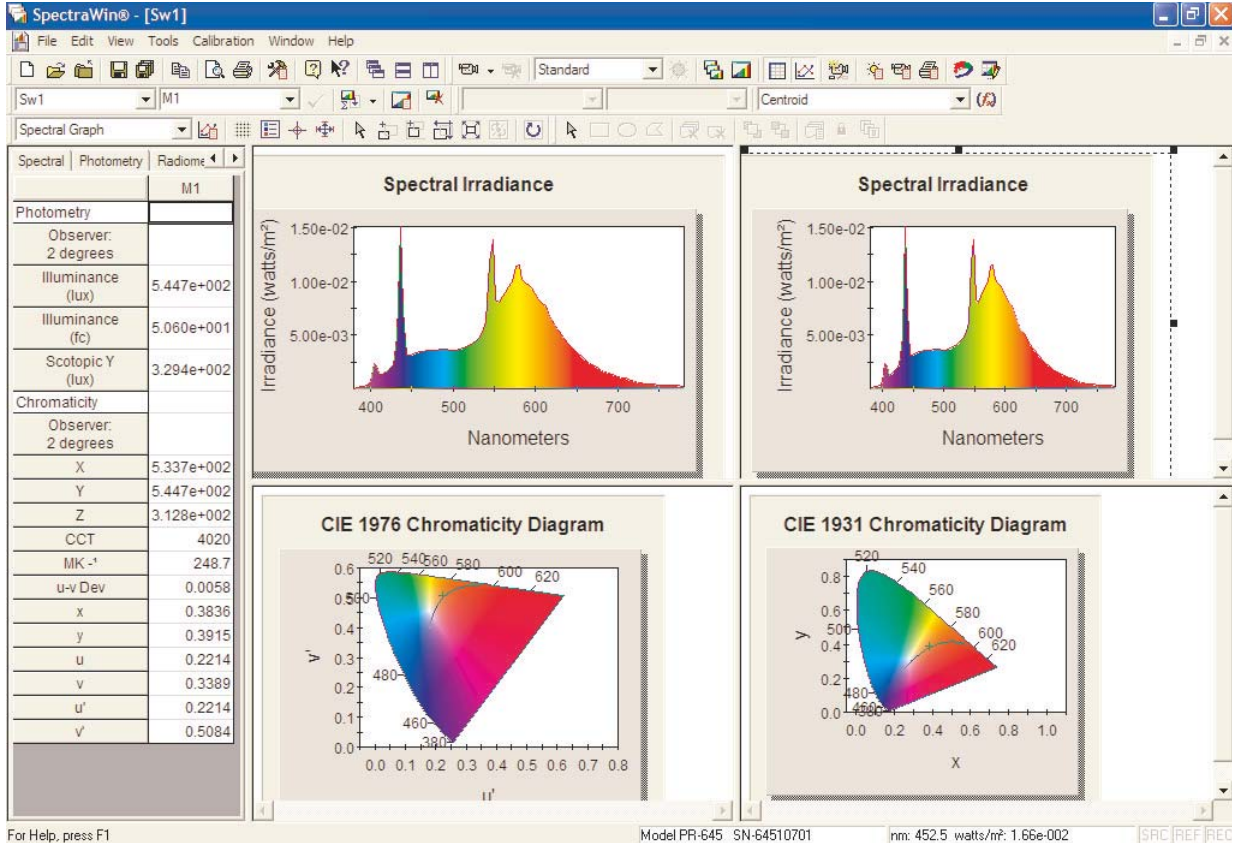
What's New

- ◆ Completely redesigned GUI
- ◆ Spectral and CIE "Crosshair" Digitizer - Tracks and reports wavelength and spectral (or chromaticity) values.
- ◆ PR-650 calibration capability (optional)
- ◆ Enhanced display graphics (zoom, refresh, scale, resize, multiple display windows for a single measurement.
- ◆ Customize tabular data display.
- ◆ Enhanced math functions including interpolation, smoothing and measurement precision.
- ◆ Multiple, user-defined GO/NO GO color regions.
- ◆ Customize graph titles, axes titles and colors.



*CIE Diagram With
Multiple Shaped Regions*

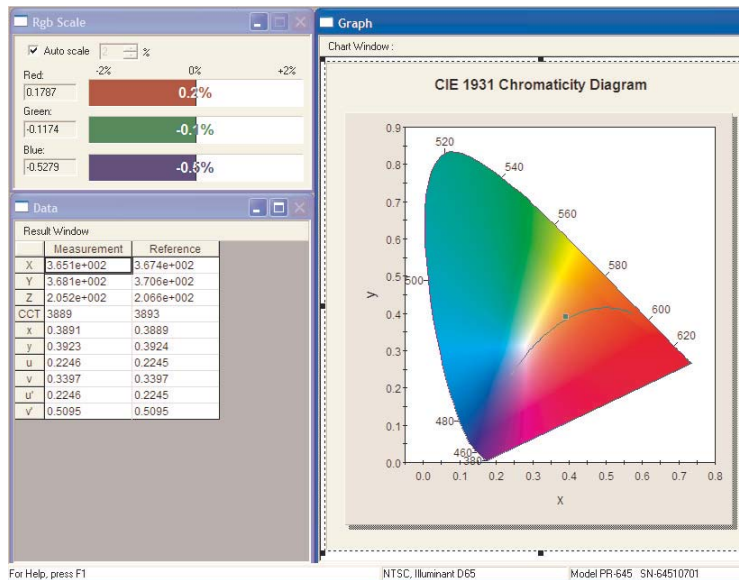
* PR-704 and PR-714 - Windows 98 and ME only.



Multiple Views of the Same Measured Stimulus

- Centroid
- No operation
 - Reciprocal
 - Log 10
 - Log e
 - Smooth
 - Multiplication
 - Division
 - Addition
 - Subtraction
 - Exponent
 - Interpolation(Linear)
 - Interpolation(Lagrange 3)
 - Interpolation(Lagrange 5)
 - Minimum
 - Maximum
 - Mean
 - Standard deviation
 - Centroid**
 - Peak wavelength
 - Signal to Noise Ratio
 - Precision
 - Luminance Contrast

Enhanced Math Functions



RGB DisplayCal Software



PHOTO RESEARCH[®], Inc.

9731 Topanga Canyon Place Chatsworth, CA 91311-4125 USA
 PH: (818) 341-5151 · EXT 1 FAX: (818) 341-7070
 www.photoresearch.com
 E-mail: sales@photoresearch.com